

Pendants + Ring Engraving Machine
MAGIC™-5S

Magic-5S is a multi-purpose engraver that engraves pendants and rings both on inner and outer in a fast process. It's light, sophisticated, less noise, portable and easy to use for anyone. Also, it has wireless controlled Bluetooth, compatible with tablet.



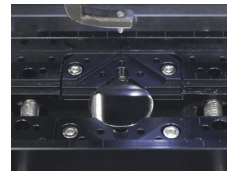
Specification

Size	388mm(W) x 267mm(H) x 323mm(D)		
Engraving Area	120mm(X) x 100mm(Y) x 30mm(Z)		
Tool Diameter	3.175mm		
Weight	21Kg		
Rotary	Outer Diameter 39mm / Inner Diameter 14~30mm		
Power Consumption	12W		
Power Supply	AC 100~240V 50/60Hz		
Bluetooth Standard	V2.1	Transmission Output	+2dBm(Typical)
Frequency	2.4GHz ISM Band	Communication Distance	10M

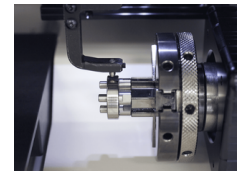
USE

engraving on the inside of ring, engraving on the outside of ring, pendants, necklaces, identification tag, jewelry, bracelets, zippo lighter, key chain or

- Wireless controlled bluetooth with compatible tablet. (Magic Touch) - Supports touch-interface with tablet. (tablet purchased separately) - Our system supports customers to design their own with tablets.
- Improved portability with lighter aluminum body.
- Internal electric switch.
- Multi-function engraver that engraves pendants and rings both on inner and outer diameter.
- Supports newly applied dimensional marking system.
- Improved multi-purpose utilization with various jig types.
- Convenient storage tray for tools and parts.
- Engraves almost every kind of metal. (gold, silver, bronze, jewelry, stainless and etc.)
- Provides upgraded program. (MagicArt-5)



A vise for easy fastening of various shapes/sizes



Ring for engraving



Tool tray



Wireless control with tablet

